

COLORED STAINLESS STEEL SHEET

Mirror Finish / Fabrication / Stainless Steel Coil

Embossed / Etching / Color

[View More >](#)



TAIGANG STEEL
COLOR INOX SERIES

CONTENT

COLOR INOX

01. Company Profile
02. Product Description

Company Profile

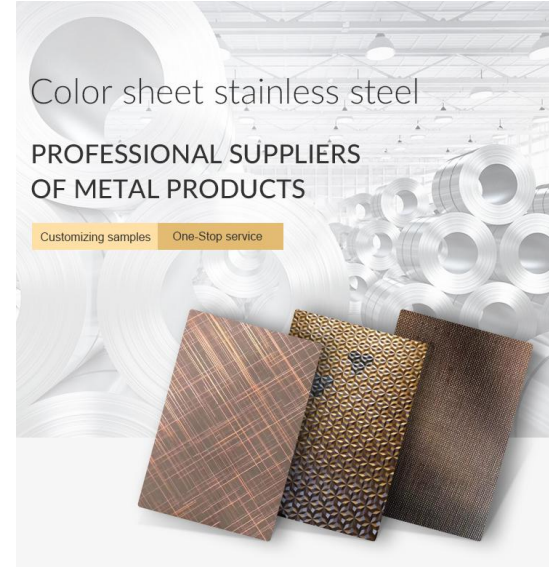
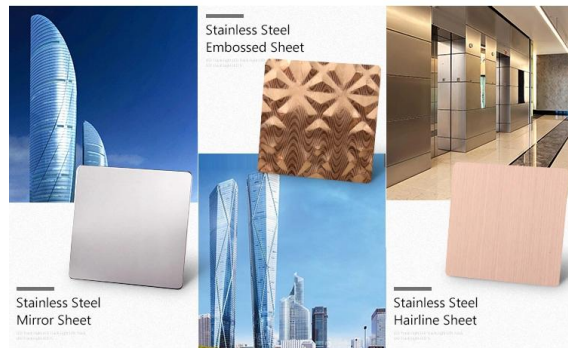
Based on TISCO, TAIGANG STEEL has been the first batch of first-class stainless steel coils, color plates and decorative pipe agents in Shandong Province since 1958. After steadily operating the domestic market, Taigang began to turn to the international market, attracting different customers from Europe, America and the Middle East with high-quality products and low prices.

Taigang focuses on the production and sales of stainless steel color plates. There are 3 sets of PVD technology plating production units, 2 cutting lines, 1 surface treatment + coating production line, 1 welded pipe forming and welding, surface polishing treatment line. It can achieve more than 100 colors, 12 different surface treatments, and different processes for high-quality thin plates and medium-thick plates. Bring high-quality and low-cost stainless steel decorative products to customers all over the world

FOCUS ON

Its products covers hairline stainless steel sheet, sand blasting stainless steel sheet, decorative pattern plate, etching pattern plate, embossed plate

[View More >](#)



Color Presentation

Decorative Surface of Stainless Steel Sheet

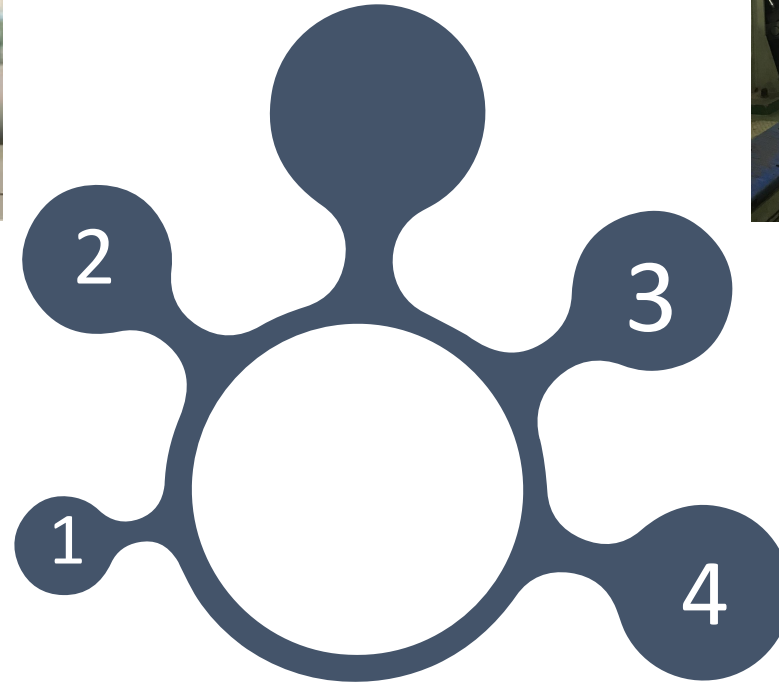
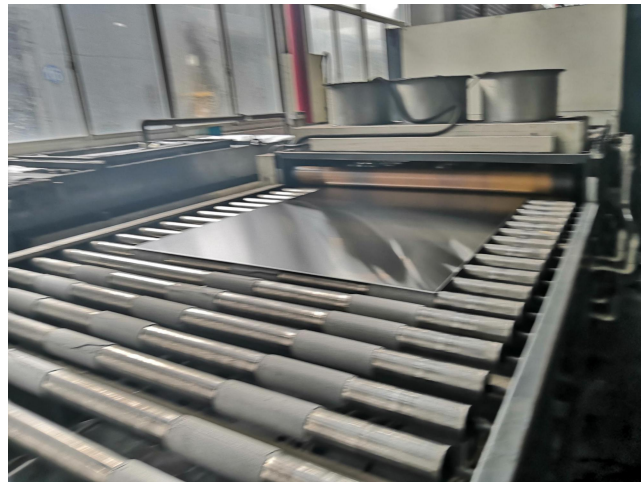


For more details please contact:

whatsapp:

website:

Factory Show



Sales Workflow



Receive inquiry



Slide 1



Factory Produced



Slide 2



Product
Transportation



Slide 3



Reach the
destination



Slide 4

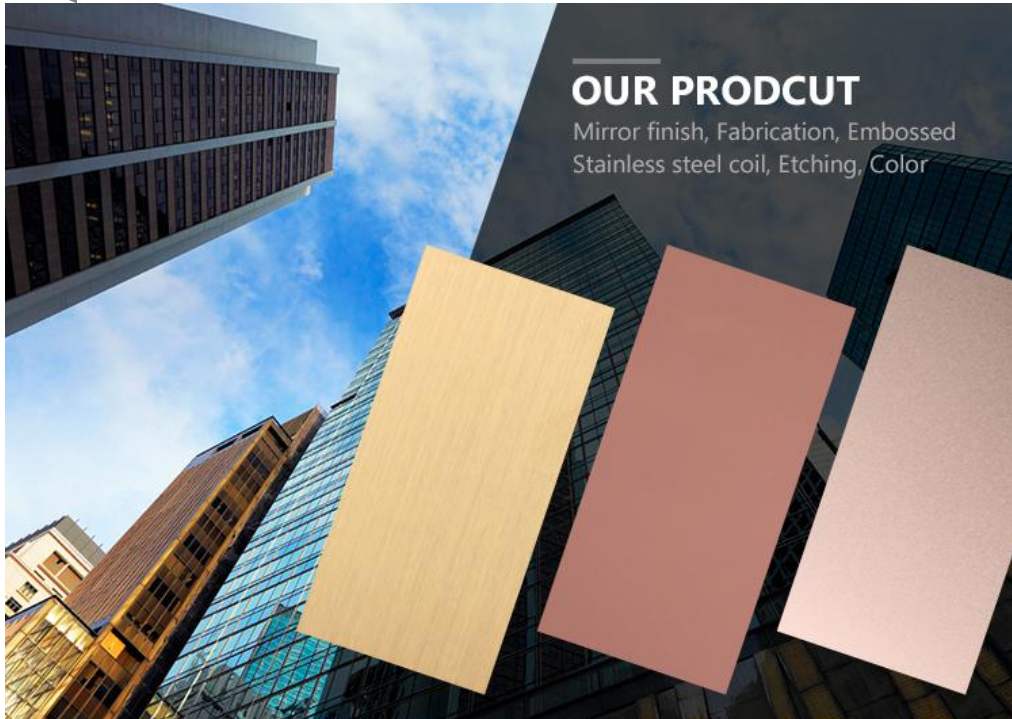


SDTaigang

COLOR INOX

I N T R O D U C T I O N

COLOR INOX



SDtaigang Color Inox Series

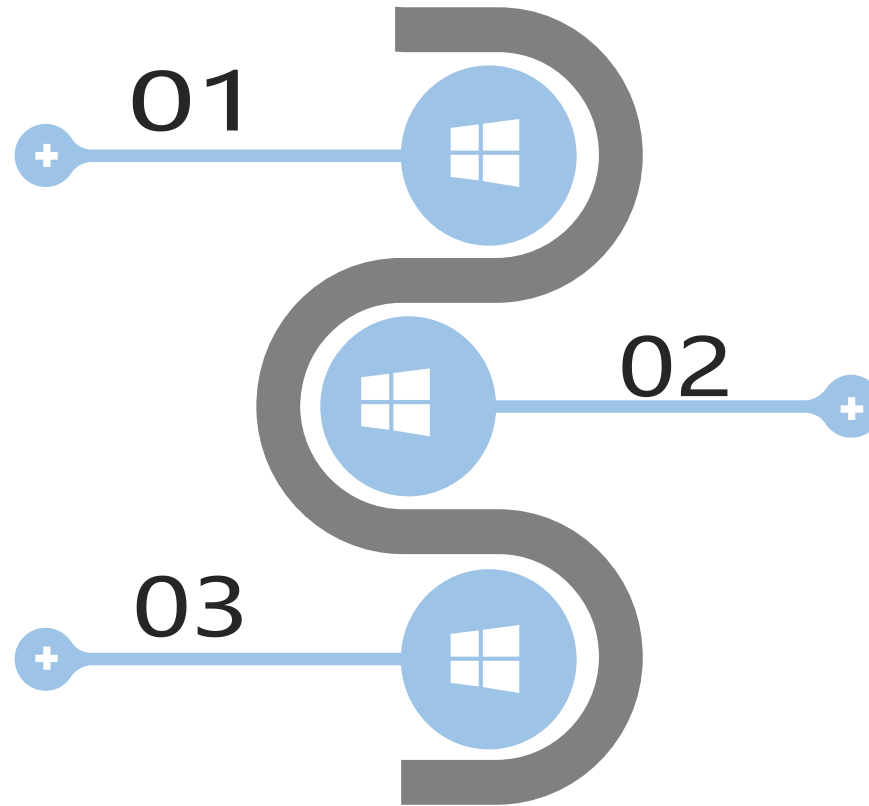
The colorful stainless steel plate is brilliant in color and is a very good decorative material. It has the characteristics of strong corrosion resistance, high mechanical properties, long-lasting color surface, and color changes with different angles of light. The color surface layer of the colored stainless steel plate can withstand a temperature of 200 ° C, and the resistance to salt spray corrosion is better than that of general stainless steel. The wear resistance and scratch resistance of the colored stainless steel plate are equivalent to the performance of the foil coating. When the colored stainless steel plate is bent at 90 ° C, the colored layer will not be damaged, and it can be used for decoration of hall wall panels, ceilings, elevator car panels, car board panels, building decoration, and signboards.

Advantages of colored stainless steel



1、 Colored stainless steel is an environmentally friendly decorative material, does not contain organic matter such as methanol, no radiation, safe and fireproof, And the colored stainless steel plate has metallic luster and hardness, easy to clean, not easy to be damaged, and scratched; it can well compensate acid and alkali corrosion, and not easy to rust

3、 The colored stainless steel plate chemically reacts on the surface of the stainless steel and produces an oxide layer on the surface of the stainless steel plate. The stainless steel and the oxide layer are integrated, and the color of the plating color does not fade;

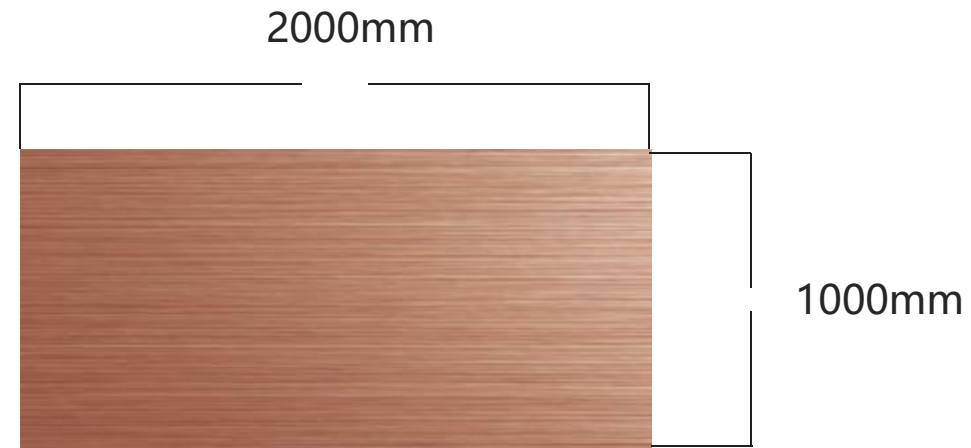


2、 On the basis of stainless steel, the existing colored stainless steel, stainless steel etching technology, stainless steel polished mirror surface, sand surface, wire drawing and other processing methods make the stainless steel plate brighter and brighter; through the etching technology, you can characterize various stainless steel graphics, text, Three-dimensional, bumpy, farewell to monotonous colors and pictures of traditional stainless steel plates;

Customized size



1000 * 2000mm

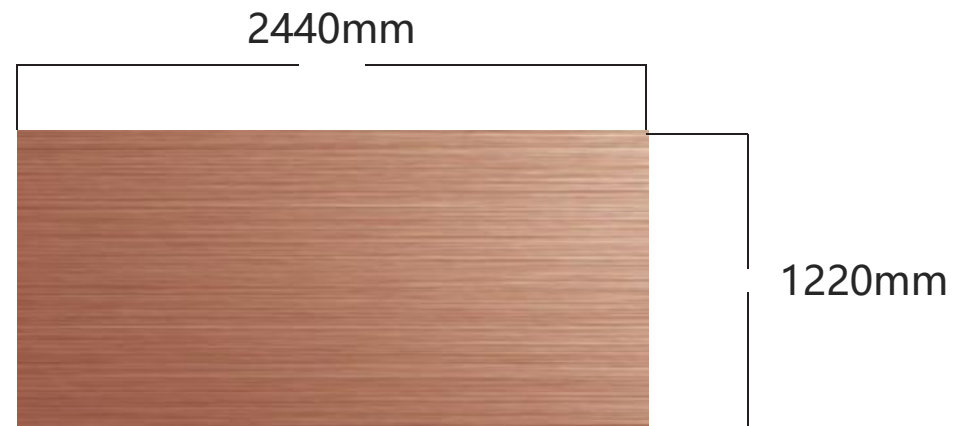


Size(MM)	SERIES SS201 / 304/ 316			
Thickness	0.5	0.8	1.2	1.5
length*weight	1000 * 2000	1000 * 2000	1000 * 2000	1000 * 2000

Customized size



1220 * 2440mm

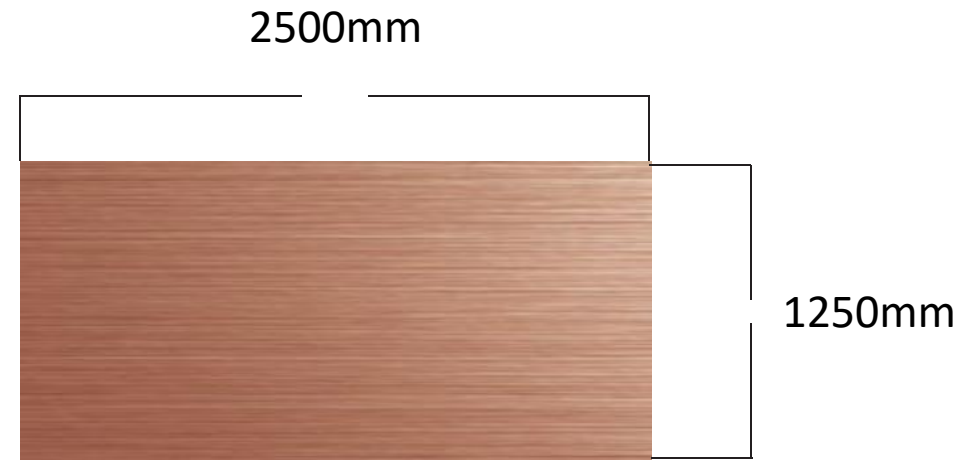


Size(MM)	SERIES SS201 / 304/ 316			
Thickness	0.5	0.8	1.2	1.5
lenght*weight	1220 * 2440	1220 * 2440	1220 * 2440	1220 * 2440

Customized size



1250 * 2500mm

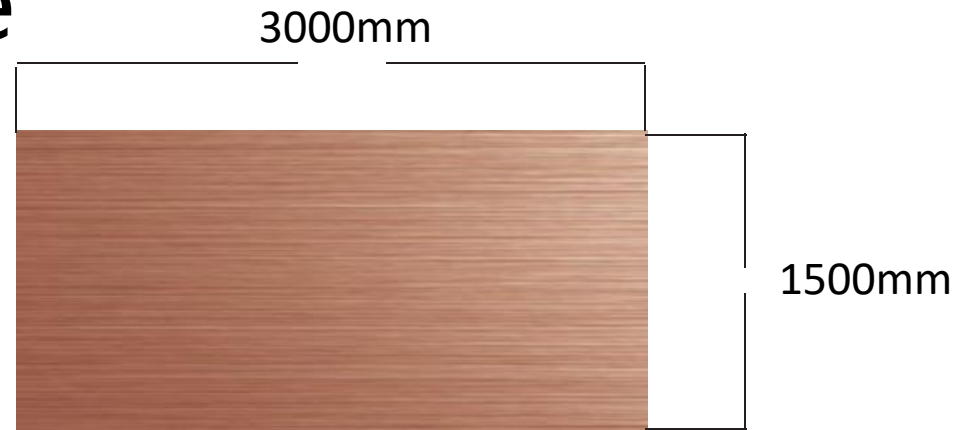


Size(MM)	SERIES SS201 / 304/ 316			
Thickness	0.5	0.8	1.2	1.5
length*weight	1250 * 2500	1250 * 2500	1250 * 2500	1250 * 2500

Customized size



1500 * 3000mm



Size(MM)	SERIES SS201 / 304/ 316			
Thickness	0.5	0.8	1.2	1.5
length*weight	1500 * 3000	1500 * 3000	1500 * 3000	1500 * 3000

Surface treatment process

HL、 The drawing board is also called hairline, because the lines are slender and straight like hair. Its surface is like a silky texture, the surface is matte, with a trace of texture



No.4、 Matte is the original color of stainless steel, and there is no graininess on the surface. Its characteristics are: as the use time is longer, the more paste is, the brighter it is.



1

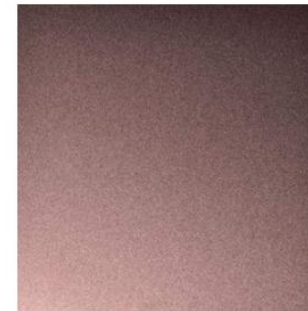
2

3

4



8K、 plate is also called mirror panel. It uses polishing liquid to polish the surface of stainless steel plate through polishing equipment, so that the brightness of the plate surface is as clear as a mirror.



Stainless steel blasting plate not only retains the excellent mechanical properties and corrosion resistance of stainless steel blasting plate, but also has a colorful and beautiful color

Brushing of surface treatment process



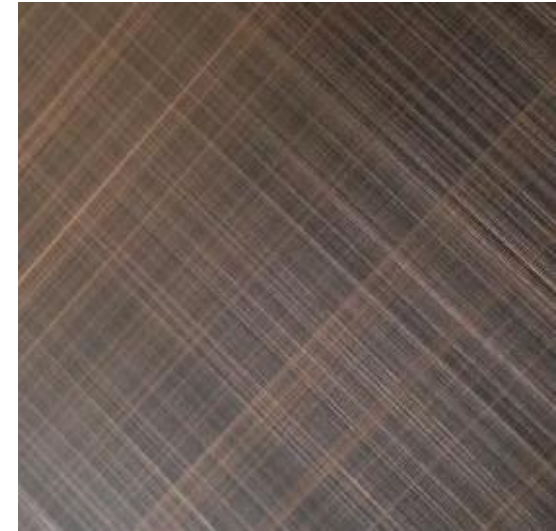
SDTaigang



Hair line Straight



Hair line Inregule

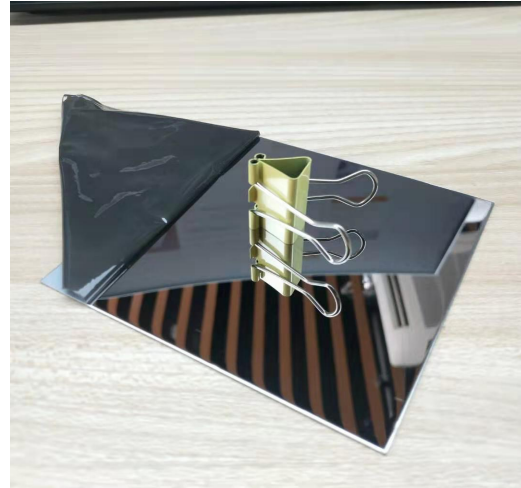


Hair line Cross

8K of surface treatment process



8K mirror gold



8K mirror



8K mirror

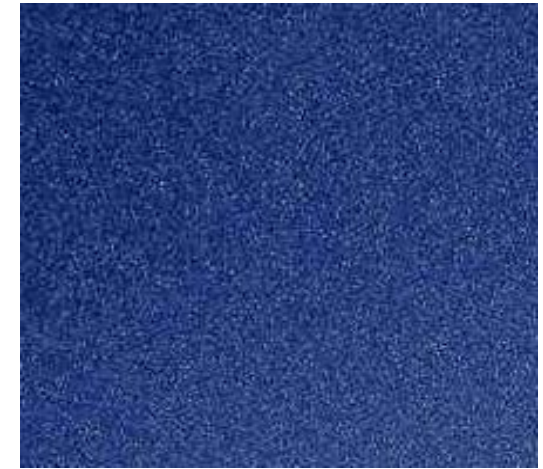
Surface Treatment Process No.4



Primary color frosted



Brown frosted



Dark Blue frosted

Colors often purchased by Asian customers



Wine red



Lake blue



Champagne gold



No.4



Wine red 8K



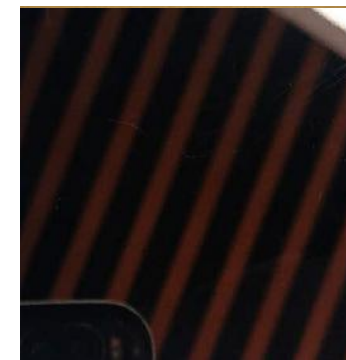
Dark blue 8K



Yellow Hair Line



Champagne gold No.4



European customers often buy colors



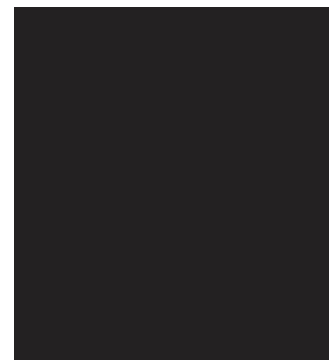
Lake blue



Rose Red



white



Black



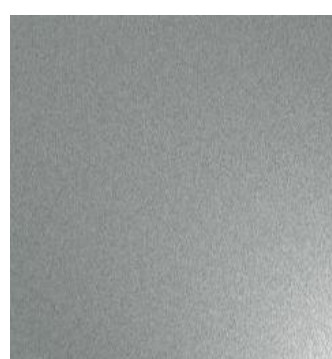
Champagne gold Brushed



Dark blue 8K



Wine red



Sand blasting



Black matte



Champagne gold

African customers often buy colors



Blue



Grade



white



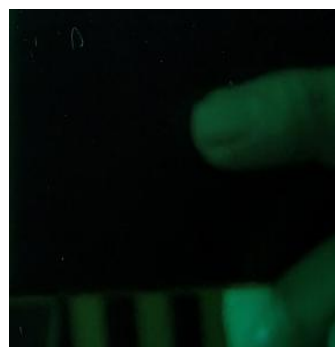
Black



Champagne gold Brushed



Dark blue 8K



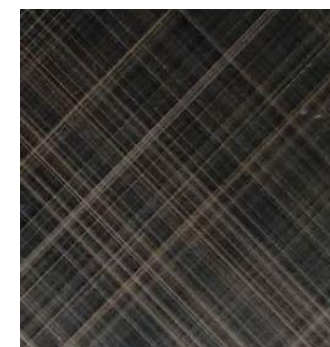
Dark blue 8K



Sand blasting



Black matte



Red bronze across HL

North America customers often buy colors



Wine red



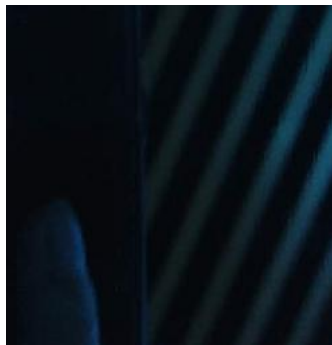
Lake blue



Yellow



Champagne gold



Wine red 8K



Dark blue 8K



Yellow Hair Line



Jade green blasting

South American customers often buy colors



Wine red



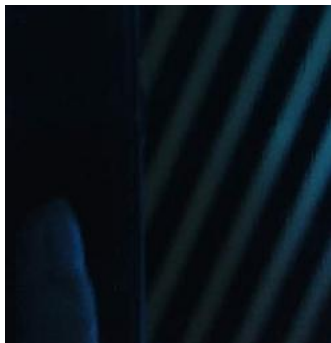
Lake blue



Yellow



Champagne gold



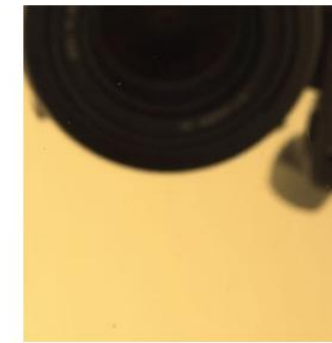
Wine red 8K



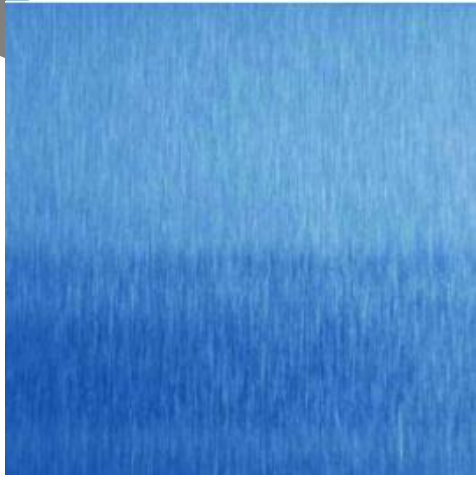
Dark blue 8K



Yellow Hair Line



Champagne gold 8K



Sapphire blue Satin



Sapphire blue Mirror



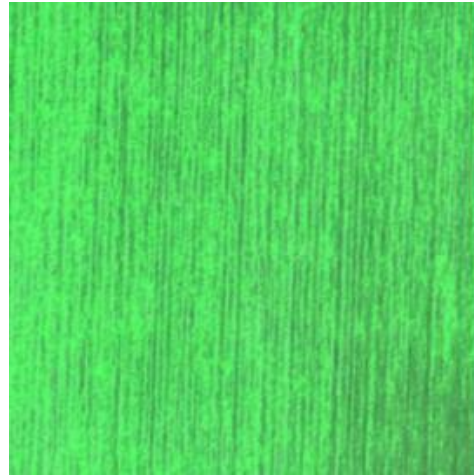
Sapphire blue Inregule Hairline



Sapphire blue Hairline



Jade green Satin



Jade green Hairline



Jade green Mirror



Jade green blasting



Wine red Satin



Wine red Mirror



Wine red Cross Hairline



Wine red Inregule Hairline



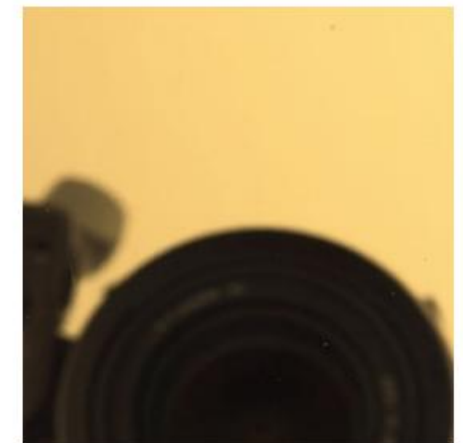
Champagne gold blasting



Champagne gold Inregule Hairline



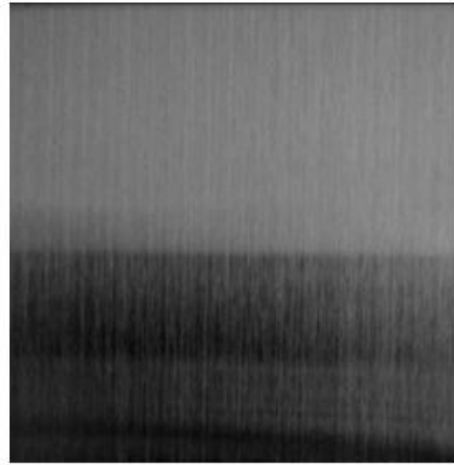
Champagne gold Satin



Champagne gold Mirror



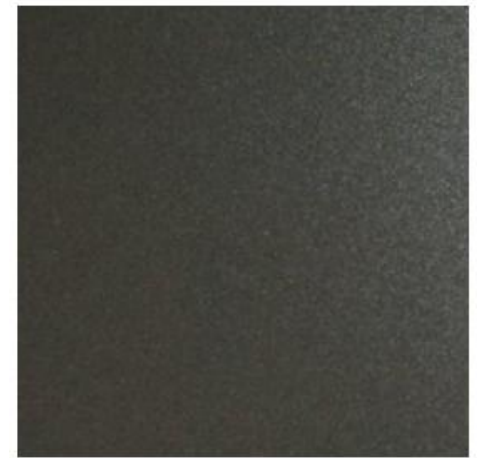
Black Hair Line



Black Mirror Hairline



Black Hair line Inregule Hairline



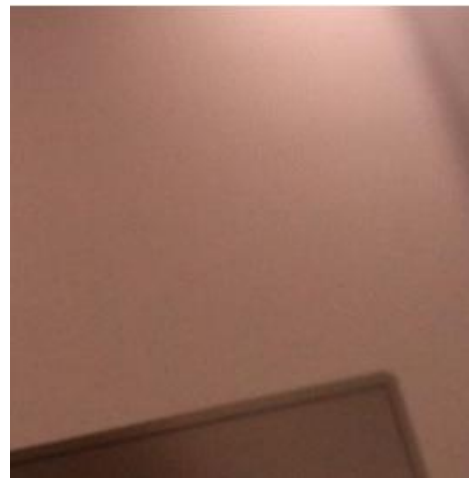
Black Matte



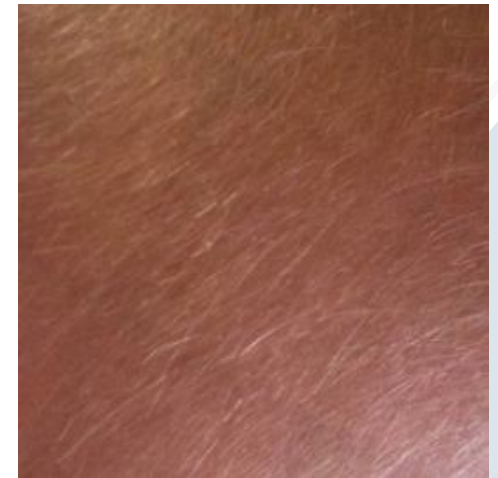
Bronze blasting



Red bronze Inregule



bronze Mirror



Bronze Inregule



WARRANTY

Item	Detail
Durance: Color fading >5%	Interior: 15~20 years
	External: 1. Fresh environment: 15 years 2. Salty environment: 10-15 years
Stain treatment	WD-40 STAIN REMOVER
Maintainance period	1. If is hand touched: Every 2 weeks 2. If no hand touched Every 2 months
Cleaner:	Stainless steel varnish oil Following maintainance period



COLOR INOX CASE

COLOR INOX



SDtaigang Color Inox Series

The colorful stainless steel plate is brilliant in color and is a very good decorative material. It has the characteristics of strong corrosion resistance, high mechanical properties, long-lasting color surface, and color changes with different angles of light. The color surface layer of the colored stainless steel plate can withstand a temperature of 200°C , and the resistance to salt spray corrosion is better than that of general stainless steel. The wear resistance and scratch resistance of the colored stainless steel plate are equivalent to the performance of the foil coating. When the colored stainless steel plate is bent at 90°C , the colored layer will not be damaged, and it can be used for decoration of hall wall panels, ceilings, elevator car panels, car board panels, building decoration, and signboards.

COLOR INOX CASE



THANK YOU!

JEFFREY FORD